

2016

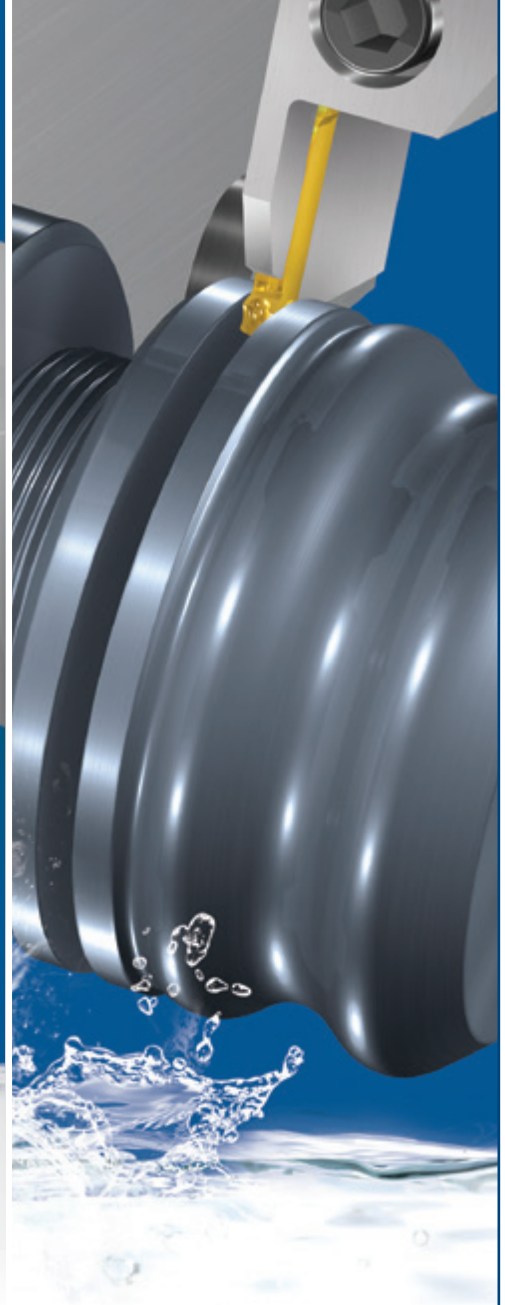
GROOVEX
Innovative Grooving & Turning Solutions

NPA 13

vargus
NEUMO Ehrenberg Group

GROOVEX NPA 13 10/2016

Page 1/2



VG-Cut

EXPANDED LINE

Complete Range of Turning Solutions

VG-Cut

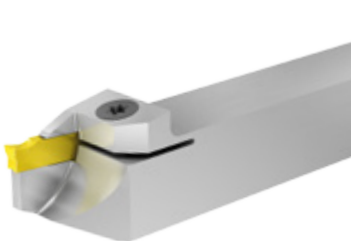
EXPANDED LINE

Complete Range of Turning Solutions

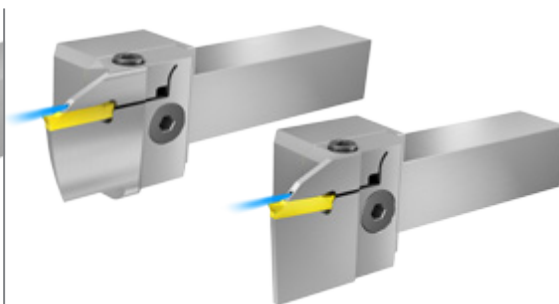
Following the successful launch of the new **GROOVEX VG-Cut Product Family** at EMO 2015, VARGUS has continued to rapidly expand the line with innovative features for **Deep Grooving, Parting Off, Profiling, Turning & Threading**.

In less than a year, VARGUS is pleased to announce the vastly expanded VG-Cut line, which includes these **features and benefits**:

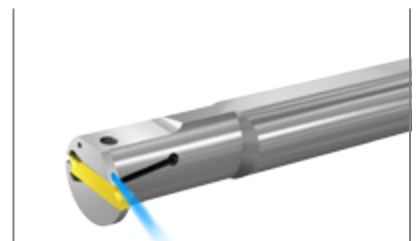
- **2.0, 3.0, 4.0, 5.0 and 6.0 mm** - A complete range of inserts for **Deep Grooving, Face Grooving, Parting Off, Profiling and Turning**
- Unique **modular system featuring high pressure coolant** for Deep Grooving, Parting Off, Profiling and Turning, offered in 0° and 90°, and available in shank sizes 20, 25 and 32 mm
- Extensive range of **Face Grooving and Turning** modules with high pressure coolant thru with pocket width ranging from to 3.0 to 6.0 mm
- **Reinforced Monoblock** toolholders for Grooving, Parting Off & Threading. Its improved stability allows to machine at higher feed rates and provides a better surface finish. Toolholders available in shank sizes 12, 16, 20 and 25 mm
- New **Internal Grooving & Turning/Boring** toolholders with high pressure coolant thru available in shank sizes 20 and 25 mm
- New **inch toolholders** are available as standard


NEW

Reinforced Monoblock Toolholders


NEW

Modular Toolholders with High Pressure Coolant


NEW

New Internal Toolholders with High Pressure Coolant